

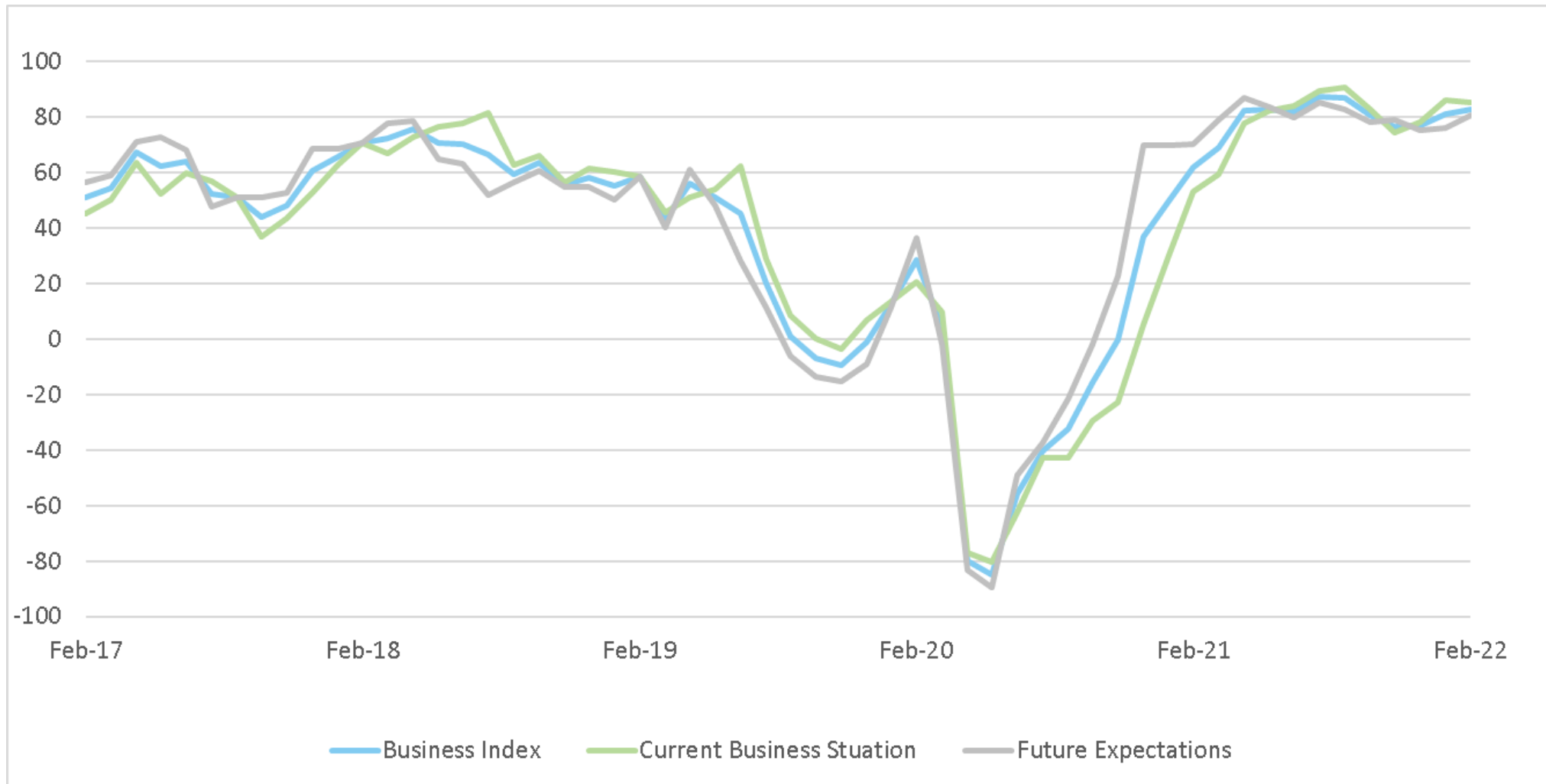
The background features a dark blue grid with several data series. One series is a line graph with white circular markers, showing a peak followed by a decline and then a slight recovery. Another series is a bar chart with vertical bars of varying heights, some above and some below a horizontal axis. The overall aesthetic is technical and data-driven.

Riccardo VIAGGI
CECE Secretary General

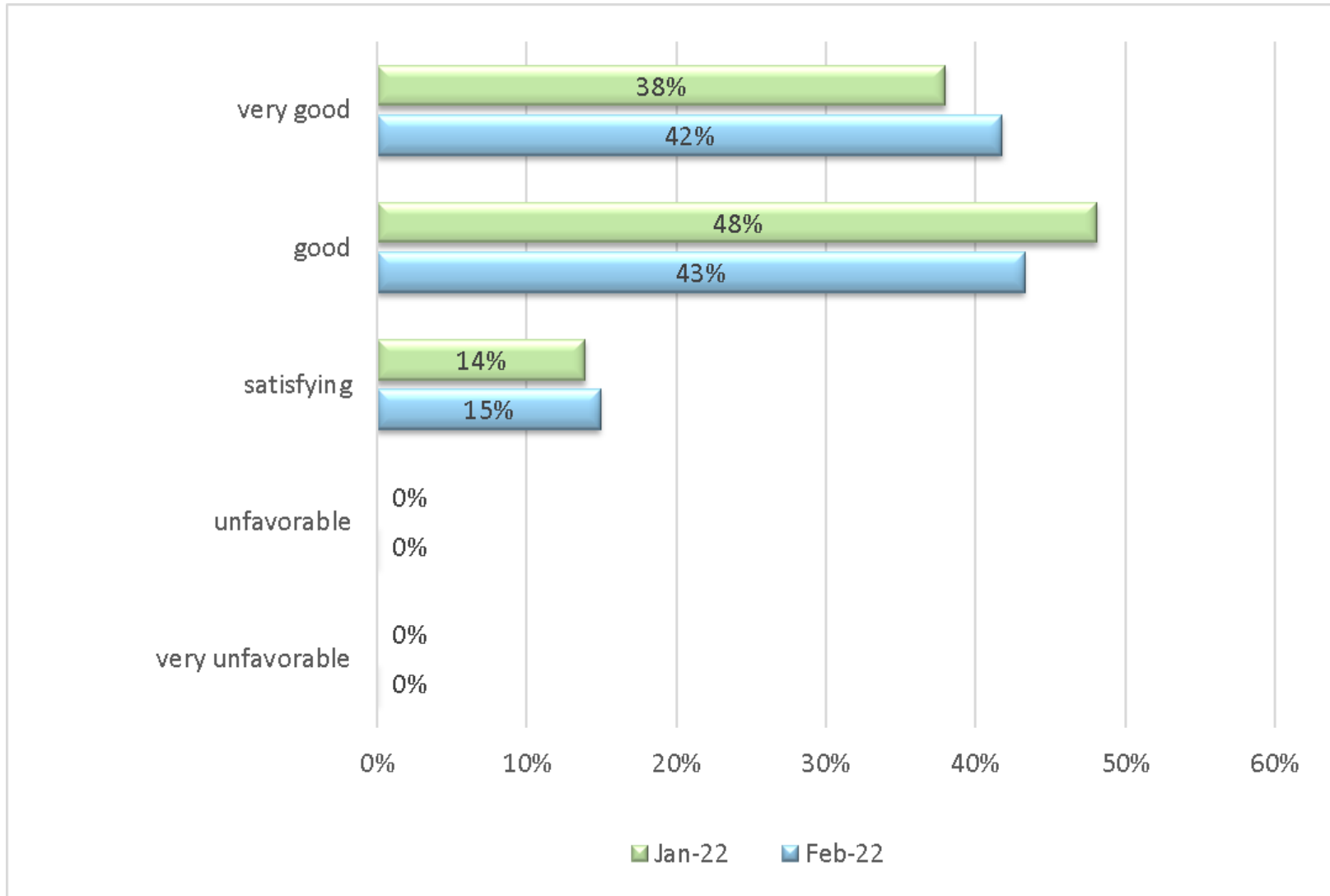
2022 outlook

#WEMAKE2BUILD

CECE Business Climate Index

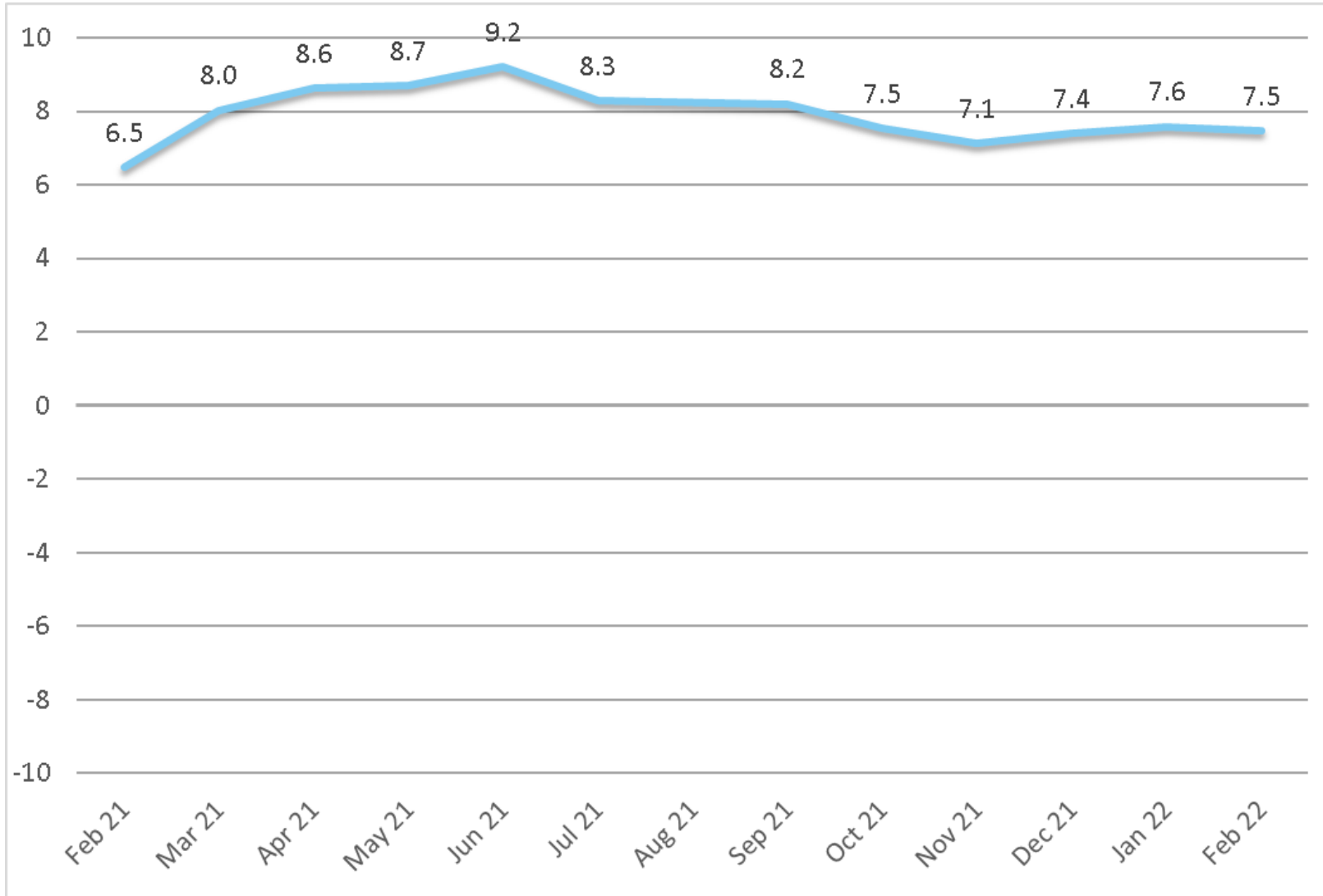


Improving sentiment & optimism in February



Monthly Business Barometer
Leading manufacturers
≈ 100 industry leaders in Europe
One respondent per company

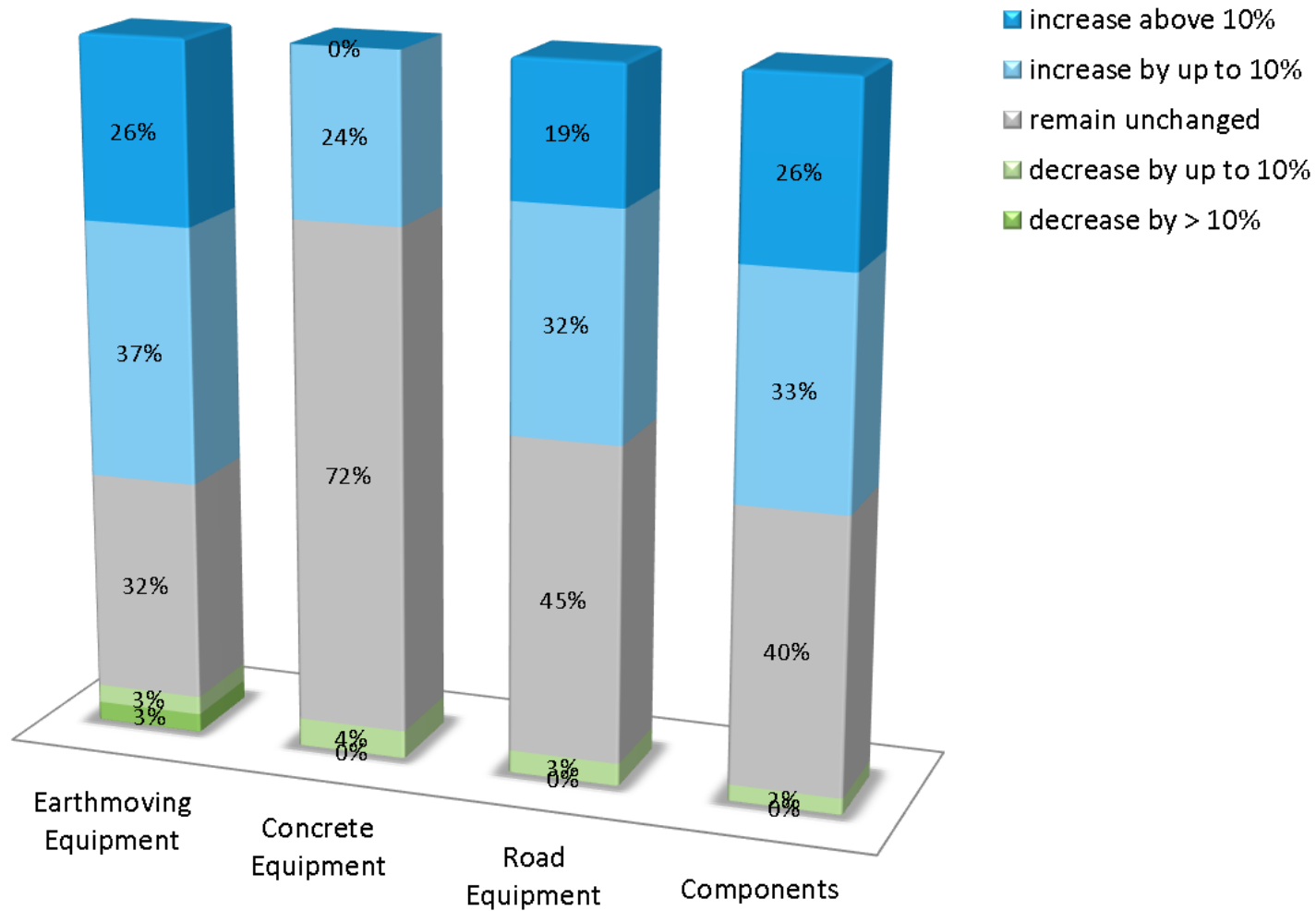
6-months sales projection



France and Central & Eastern European countries show stronger potential for sustained growth (will it stay the same?)

North-America is strongest area among international markets

6-months sales projection

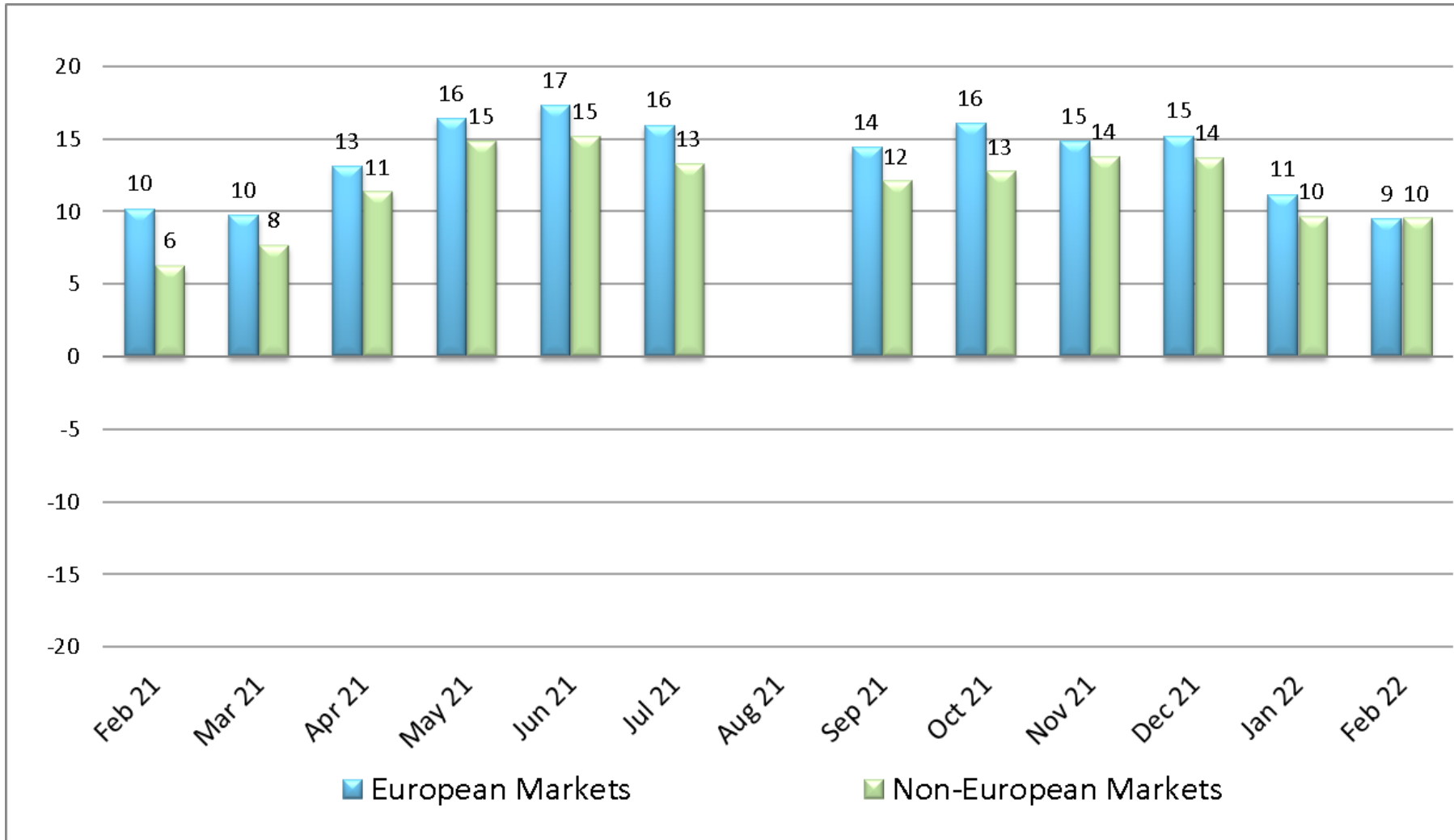


Earth-moving & components with strongest growth tendencies

Concrete equipment to slow down: civil engineering growing faster than building construction

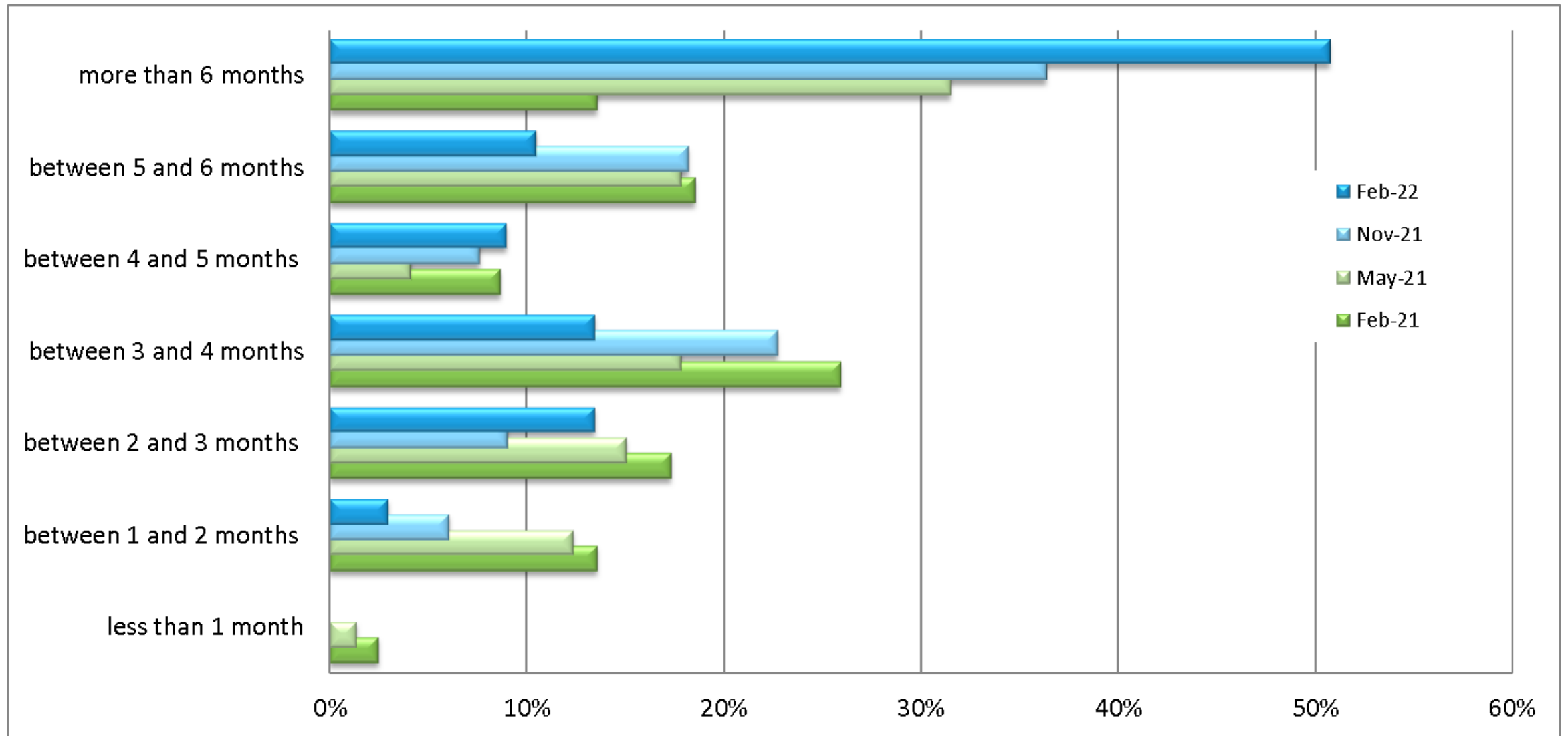
Road-equipment remains positive

Incoming orders stay strong

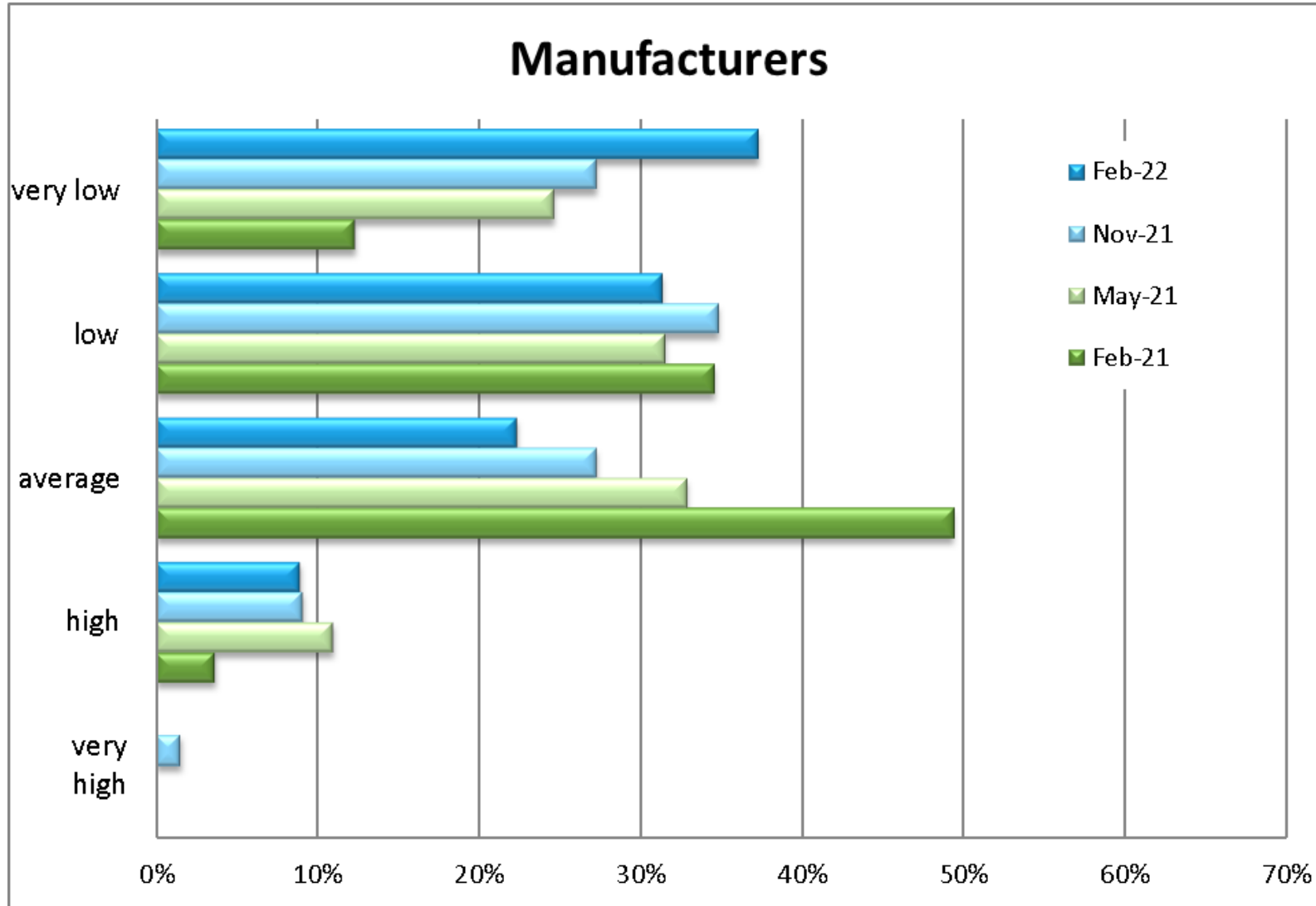


Year-on-year comparisons of new orders show solid performance

Production backlogs skyrocketing



Inventories evolve accordingly



Supply-side bottlenecks

Lack of components & materials

Majority of respondents report
willingness to increase staff on a long-
term basis

Want to know more?

Contact info@cece.eu

You are a CECE OEM?

Join the [CECE Business Barometer](#)

You are not a member company?

Ask about the [CECE Intelligence Partnership](#)